

# BY THE NUMBERS



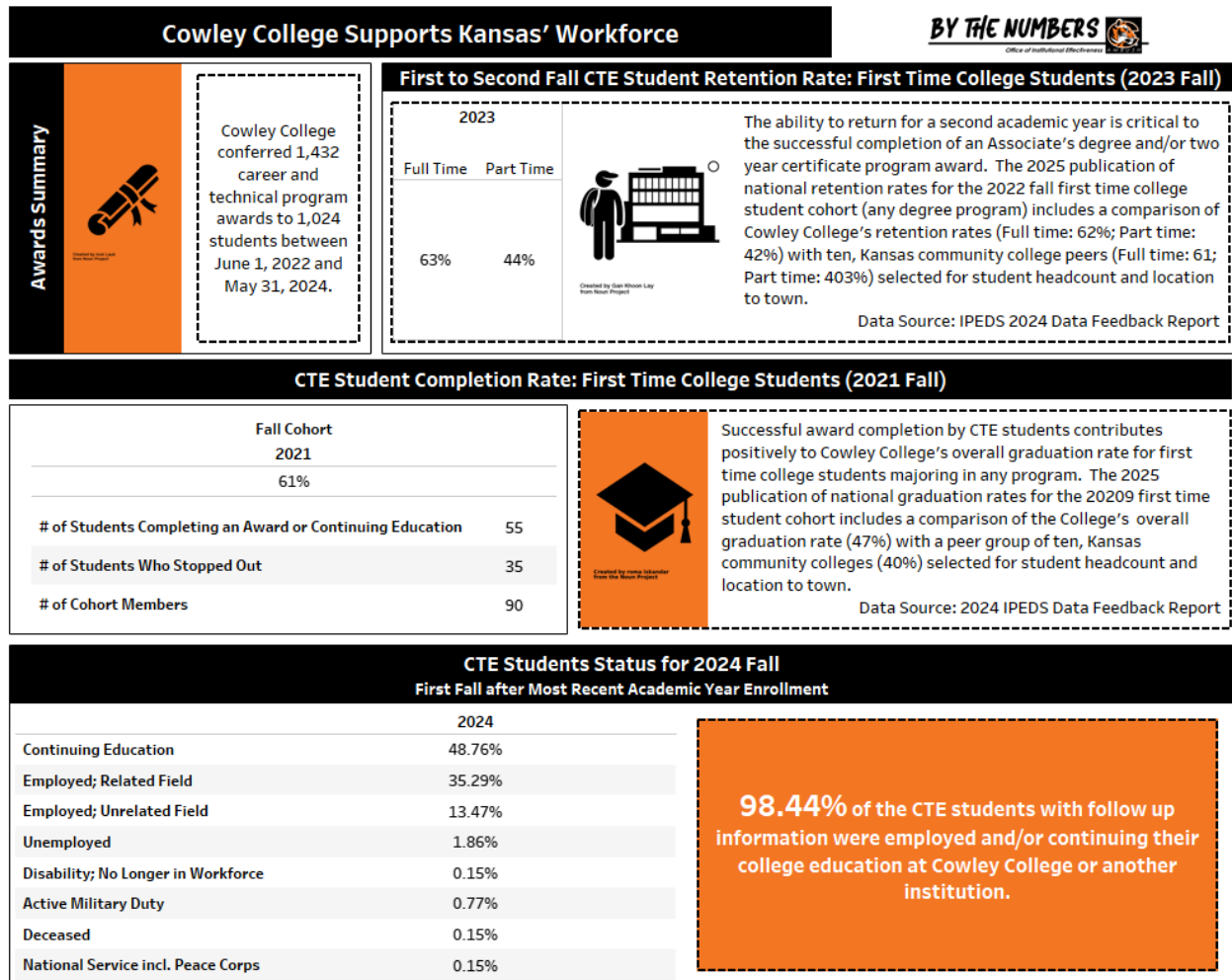
Office of Institutional Effectiveness

## Cowley College Supports Kansas' Workforce

Cowley College supports workforce needs across Kansas through Associate's degree and workforce certificate-level awards in career and technical education (CTE) programs.

971 students majored in at least one, CTE program during the 2023-2024 academic year with the most popular program choices including Medical Coding, Welding Technology, and Nondestructive Testing Technology.

The information in the graphics below reflects data reported to the Kansas Board of Regents (KBOR) and the Integrated PostSecondary Database (IPEDS) as part of an annual data collection.



Join the Tiger Ambush! Working to use information to create quality for employees and students. For more details, visit the Office of Institutional Effectiveness webpage to read the corresponding, expanded report.

## Licensure Rates

### KBOR Follow Up Collection Reporting Year

The information in the bar charts below is reported annually as part of the Kansas Board of Regents' (KBOR) Follow Up Collection. This collection follows up during the next fall for the students identified as Perkins V Concentrators during the previous academic year.

#### Health Professions

# of Students Attempting Licensure Suppressed when <10

Emergency Medical Technician CIP Code 51.0810		MICT-Paramedic CIP Code 51.0904		Home Health Aide CIP Code 51.2602	
2024		2024		2024	
# of Students Attempting Licensure	72	# of Students Attempting Licensure	37	# of Students Attempting Licensure	15
# of Students Passing Licensure	48	# of Students Passing Licensure	35	# of Students Passing Licensure	15
Licensure Rate	67%	Licensure Rate	95%	Licensure Rate	100%

#### Health Professions

# of Students Attempting Licensure Suppressed when <10

#### Personal and Culinary Services Professions

Certified Medication Aide CIP Code 51.2603		Restorative Aide CIP Code 51.2604		Certified Nursing Assistant CIP Code 51.3902		Cosmetology CIP Code 12.0401	
2024		2024		2024		2024	
# of Students Attempting Licensure	16	# of Students Attempting Licensure	11	# of Students Attempting Licensure	155	# of Students Attempting Licensure	10
# of Students Passing Licensure	16	# of Students Passing Licensure	11	# of Students Passing Licensure	143	# of Students Passing Licensure	8
Licensure Rate	100%	Licensure Rate	100%	Licensure Rate	92%	Licensure Rate	80%

Join the Tiger Ambush! Working to use information to create quality for employees and students. For more details, visit the Office of Institutional Effectiveness webpage to read the corresponding, expanded report.