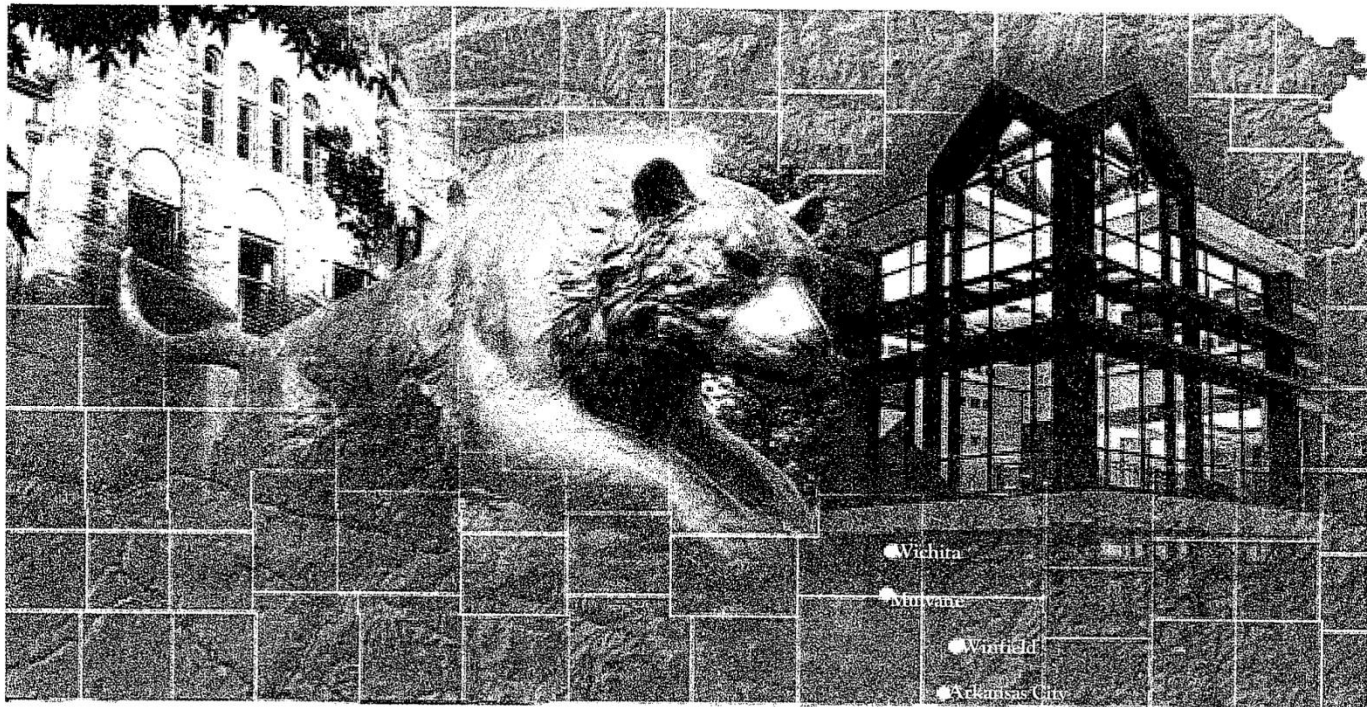


# COWLEY COLLEGE

President's Report  
2007 - 08



● Wichita

● Mulvane

● Winfield

● Belton City

Cowley College is award winning academic and vocational programs, career changing academic excellence, state of the art theatre, music and fine arts and national champion athletics. Our college began in a basement of a high school 85 years ago. Since then we have become magnetic athletics, soaring performance arts and an institution of quality and innovative higher education. We're proud of our heritage and we're excited about our future.



Founded: 1922

In 1968, the College became the first school in the state to combine a traditional liberal arts transfer curriculum with a program of area vocational-technical school training.

President:

Dr. Patrick McAtee became the third president of the College on July 1, 1987.

2005 Fall and 2006 Spring Enrollment:

More than 3,000 Full-Time Equivalency

More than 4,500 Total Headcount

Programs:

68 majors and degree possibilities

30 clubs and organizations

More than 100 specialized programs and seminars offered through the Cowley Golden Tigers, a program for men and women age 50 and older. Specialized training for business and industry to meet their needs. In the past the college has developed or offered programs for General Electric, Rubbermaid-Winfield, the city of Arkansas City, the city of Winfield, local school districts, day care centers, local nursing homes, special education co-ops, KSQ Blowmolding, Social Rehabilitation Services, Southwestern Bell Telephone, Wittur Inc., Boeing-Wichita, Cessna, the business and industry division of banks, and many others.

Facilities:

19 buildings on a 10-acre campus in the heart of downtown Arkansas City.

Outreach Centers in Mulvane, Strother Field, Winfield, and Wichita. Courses also taught at these area high schools: Argonia, Belle Plaine, Burden, Caldwell, Cedar Vale, Conway Springs, Dexter, Oxford, South Haven, Udall, and Wellington.

Welcome to the 2007-08 edition of the President's Annual Report.

I'm very proud to tell you that the past academic year was one filled with many outstanding student accomplishments, faculty and staff awards, and growth and improvement in many areas of the college.

Our students never cease to amaze me. Some are just naturally gifted individuals who achieve at the highest level and aspire to be highly skilled professionals in their chosen career. Others sacrifice time with their families to gain new skills or finish a degree to become more employable in today's competitive job market.

Cowley's goal is to take care of its students, regardless of their place in life. Sometimes we fail, and for that I apologize. But, I can tell you that Cowley employees want every student to experience success. How that success is measured depends on the individual.

Alex Gottlob from Winfield is our 2006-07 Student of the Year. What a smart and driven young man! The business administration major was a member of three campus organizations. At the National Leadership Conference in Nashville, TN, this past June, he became the first Cowley student to place first at the national level as he placed first in Job Interview. He also found time to continue running his own business, Gottlob Lawn and Landscape.

Humanities Department Instructor Marlys Cervantes was selected as the fifth recipient of the Endowed Chair for Teaching Excellence and Student Learning.

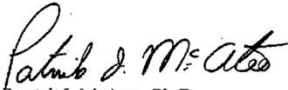
Community College Week listed Cowley as one of the top-100 associate degree producers. The college has grown significantly during my 20 years as president.

Our Center for Technical Excellence in Winfield now provides state of the art training facilities and laboratories to increase business and industry development county wide. We will teach a series of courses with the Manufacturing Business Skills certificate program, and launch our new Mechatronics program, which will give students skills on how to repair automated systems.

This report includes many other wonderful highlights from the past year. I invite you to read through it carefully. It is my hope that it will give you a better understanding of what Cowley is all about and the direction we're heading.

On behalf of our Board of Trustees, my fellow administrators, our faculty, staff and students, I want to thank you for your support of Cowley County Community College. It means a great deal to me. The college has always been a viable entity within Arkansas City, Cowley County, and south-central Kansas. We will do our very best to keep it that way.

Sincerely,



Patrick J. McAtee, Ph.D.



Patrick J. McAtee, Ph.D.

## CORE VALUES

Cowley County Community College and Area Vocational-Technical School is dedicated to the continual pursuit of excellence by embracing our Core Values, the fundamental principles that guide our actions.

### People

- \* We emphasize the importance of human relationships, diversity, and a sense of community.
- \* We provide student-centered instruction.
- \* We provide a safe, learning environment where joy, humor, and teamwork are embraced.
- \* We encourage open communication and the sharing of ideas.

### Leadership

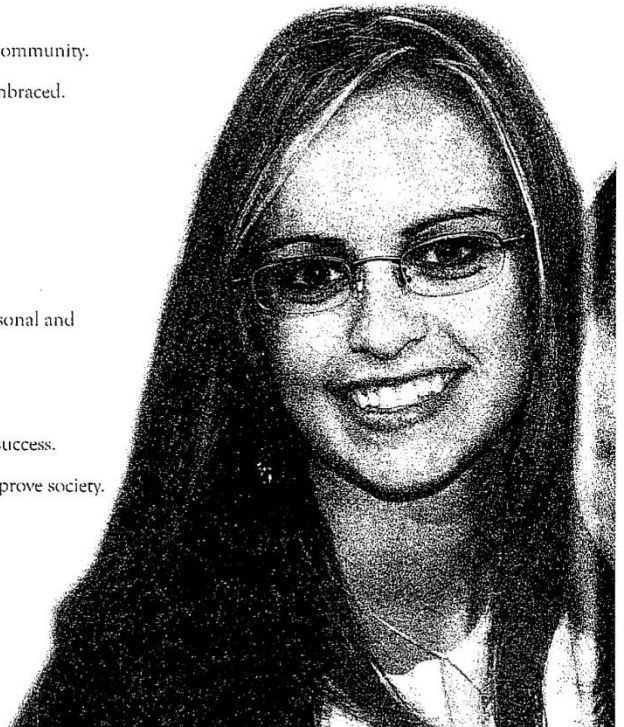
- \* We provide a positive atmosphere that fosters personal and professional growth.
- \* We empower students and employees to be innovative and visionary.
- \* We are an ethical leader in the field of education.

### Integrity

- \* We regard honesty, trust, and respect as essential principles in our academic, personal and professional standards.

### Accountability

- \* Our students will receive a quality education.
- \* The College will provide students the opportunity to take an active role in their success.
- \* All employees are responsible and committed to excellence.
- \* We are accountable to the community to educate students and to sustain and improve society.





## MISSION STATEMENT

Cowley College and Area Vocational-Technical School is committed to learning excellence and personal enrichment in an open access environment.

## STATEMENT OF INSTITUTIONAL PURPOSE

We are committed to maintaining a quality institution by meeting and exceeding the expectations of customers through the following:

**Academic and Personal Enrichment:**

The college will provide accessible curricula in an environment that promotes individual growth and personal enrichment.

**Support Services:**

The college will facilitate academic growth and the development of life skills.

**Community Development:**

The college will foster development of the community through public service programs and partnerships with business and industry.

**Fiscal Soundness:**

The college will secure financial support from various resources and maintain a financially stable institution.

**Ethics:**

The college will emphasize a sense of fairness, citizenship, and tolerance for the views of others.

## Who We Serve

### Spring 2006 Semester Enrollment by location

Arkansas City .....	1,486
SSEC .....	2,346
Virtual Campus .....	967
Mulvane Bloomenshine .....	477
Aviation Tech Center .....	154
Wellington .....	116
Winfield .....	111
Mulvane IT .....	88

### Percentage by Gender

Male .....	41%
Female .....	59%

### Percentage by Ethnic Group

Black/Non-Hispanic .....	6.8%
Native American .....	1.0%
Asian .....	4.0%
Hispanic .....	4.5%
Caucasian .....	81%
Other .....	2.7%

### Percentage by Age

Under 18 .....	1.0%
19-22 years old .....	47.5%
23-29 years old .....	21.7%
30-49 years old .....	21.6%
50 and over .....	3.8%

### 2006-07 Enrollment Data

Annual Unduplicated Headcount .....	6,992
Headcount Fall 2005 .....	5,244
Headcount Spring 2006 .....	4,960
Full-time Equivalent Students Fall 2005 .....	3,193
FTE Students Spring 2006 .....	3,021
International Student Enrollment .....	83

# COWLEY COLLEGE

## Your Return on Investment

### Expenditures by Source 2006-07 (unaudited)

Instruction	\$8,680,684	45.53%
Academic Support	\$679,035	3.56%
Student Services	\$3,035,021	15.92%
Institutional Support	\$2,407,553	12.63%
Operations & Maintenance	\$3,962,924	20.79%
Grants	\$275,811	1.45%
Transfers	\$25,000	0.13%
Total	\$19,066,028	100.0%

### Revenues by Source 2006-07

Student Sources	\$5,738,164	30.16%
Federal Sources	\$190,940	1.00%
State Sources	\$8,117,400	42.66%
County Sources	\$252,345	1.33%
Local Sources	\$4,106,124	21.58%
Other Sources	\$621,836	3.27%
Total	\$19,026,809	100.0%

### Impact to Local Taxpayers

College, employee and student spending in Cowley County  
"Roll-over" effect of direct spending in county (multiplier = 1.6)

State/local taxes received in 2005-06  
(including property & motor vehicle taxes)

Net Return to Taxpayers  
(based on direct spending only)

Net Return to Taxpayers  
(including roll-over effect)

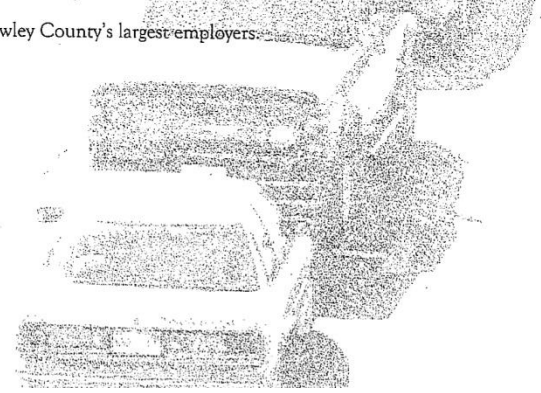
Dollar-for-dollar return  
(based on direct spending only)

Dollar-for-dollar return  
(including roll-over effect)

(Does not include economic impact of student tuition and fees, visitors & increased productivity through a better educated workforce.)

- Fifth lowest mill levy at 18.595 mills.

- One of Cowley County's largest employers.



# Student Return on Investment

## Your Investment

- \$3,128,525 in 2001-02 taxes; \$3,522,702 in 2002-03 taxes. For every dollar appropriated by state and local government, the college's spending alone generated \$1.42 in wages and salaries in Cowley County.

- For every dollar appropriated by the state and local government in fiscal 2002, student earnings will increase by an average of \$0.82 per year, every year through the rest of their working lives. Likewise, for every state dollar appropriated, Cowley County will see social savings of \$0.13 per year, every year (reduced incarceration and health care expenditures, reduced expenditures on unemployment and welfare, and reduced absenteeism).

- The College is third in size among the 19 community colleges in Kansas, behind Johnson County Community College and Butler County Community College.

## Your Return

- Cowley had operating expenses of \$11.9 million in fiscal 2002, and spent \$9.6 million (81 percent) of this in Cowley County to purchase supplies and pay wages and salaries.

- \$9 million annual payroll, providing 189 full-time jobs and 239 adjunct faculty and staff positions. For every \$1 the college pays in wages and salaries, there is another \$0.31 in wages and salaries generated off-campus in the Cowley County economy—this is the commonly known multiplier effect.

- Customized training for more than a dozen businesses and industries, primarily through the Cowley College Workforce Development Center at Strother Field Industrial Park.

- A significant attraction for businesses and industries considering relocation in this area. College skills embodied in the present-day workforce increase the output of industries in the Cowley County economy, where the former students are employed, by \$83.63 million.

- Skills gained from the college by current and former students increase wages and salaries in Cowley County by \$25.5 million directly, and by another \$19.3 million indirectly in fiscal 2002.

- Of the 2,054 credit and non-credit students who attended the college in fiscal 2002, 67 percent were employed full- or part-time while attending. Sixty percent of the students stay in the region and contribute to the local economy after they leave the college.

- After leaving the college, the average Cowley student will spend 40 years in the workforce. The student who leaves with a two-year college degree will earn \$372,799 more than someone with just a high school diploma or GED.

- During the next 40 years in the workforce, the average Cowley student's discounted lifetime earnings will increase \$7.60 for every education dollar invested (in the form of tuition, fees, books, and foregone earnings from employment).

## Foundation Balance Sheet

### ASSETS

Total Cash and Investments	\$3,233,944
Pledges Receivable	\$161,486
Capitalized Assets	\$48,590
Total Assets	\$3,444,020

### LIABILITIES AND NET ASSETS

Total Current Liabilities	\$48,591
Total Long-Term Liabilities	\$112,895
Total Liabilities	\$161,486

### NET ASSETS

Unrestricted	\$350,409
Temporarily Restricted	\$596,271
Permanently Restricted	\$1,903,164
College Owned	\$432,690
Total Net Assets	\$3,282,534
Total Liabilities and Net Assets	\$3,444,020



## Key Performance Indicators

Cowley relies upon a set of Key Performance Indicators to assess the college's effectiveness and to demonstrate accountability to its stakeholders. This abbreviated report provides an overview of Cowley's performance in key areas over the past year.

To expand partnerships with other educational institutions, governmental agencies, and business and industry.

At least five new partnerships will be established each year.

The partners for 2006 included Wichita State University's "Education 2+2" program; an Associate Degree in Nursing Program with Pratt Community College; a business Administration Degree with Friends University; shared facilities with Mulvane USD 263; and an entrepreneurship program with Home National Bank.

Number of course sections offered in conjunction with Cowley partner will increase.

46 new course sections were offered in conjunction with Cowley partners.

Number of students enrolled in course sections offered in conjunction with any Cowley partner will increase.

335 students enrolled in classes as a result of new partnerships.

To improve the success of students in the core skills of reading, writing, and mathematics.

Number of students exceeding the national average in reading, writing, and mathematics on the Collegiate Assessment of Academic Proficiency (CAAP) will increase from 2005.

270 students exceeded the national average in reading compared to 203 in 2005.

262 students exceeded the national average in writing compared to 183 in 2005.

365 students exceeded the national average in mathematics compared to 229 in 2005.

To increase the "performance gap" on the Noel Levitz Student Satisfaction Survey.

Six of the 14 measurements of student satisfaction showed directional improvement.

To expand Cowley's industrial technology training in aviation airframe and powerplant maintenance, automotive technology, machine tool technology, and welding.

To increase the number of courses taught in industrial technology disciplines.

431 sections of courses offered as compared to 262 in 2005.

Number of students enrolled in industrial technology courses will increase.

580 students enrolled as compared to 321 in 2005.

Number of students who successfully complete an FAA airframe or powerplant certification will increase.

95 students received their FAA airframe or powerplant certification as compared to 15 students in 2005.

## Looking Ahead

At Cowley ours is a story built from the ground up, full of courage, and the confidence that comes with success through risk-taking. Our students are explorers on a transforming journey and we are an institution driven by quality and dedicated to engaging its students and communities in unique learning experiences that expand their minds and spirits. We are dedicated to student success and as they become transformed so too do we. Find The Noise from within!!!

As we take the next steps in our journey we are excited about our continuing partnerships with area universities, colleges, community colleges and industry designed to build a world class workforce for area employers. We look forward to new partnerships to build academic opportunities to enhance transfer and articulation in our arts and sciences degree programs for our students. New or enhanced programs in Mechatronics, Interior Design, Avionics, Leadership, Office Technologies, Computer Help Desk, Entrepreneurship, Medical Transcription and Coding and the expansion of our Mobile Intensive Care Technician program will afford our students a variety of career and academic options in high demand high wage occupations. And our efforts in delivering a service learning program for all Cowley students will cultivate a spirit of giving back to the benefit of our communities.

Last, we have identified five areas of focus for the institution for the next year

- Improve Student Learning Outcomes; Communication Skills, Computation Skills, Critical Thinking and Problem Solving, Technology Skills, Community Skills and Interpersonal Skills.
- Enhance teaching, learning and student engagement both in and out of the classroom.
- Respond to area employer demands and provide support for community workforce development.
- Expand visibility of the college through enhanced marketing efforts.
- Expand resources through entrepreneurial endeavors.



## Special Recognitions Highlights of faculty, student and staff accomplishments over the last year.

\* **Bruce Crouse** – The department chair of career and technical education at Cowley College, was named the Kansas Council on Workforce Education (KWCE) 2007 Award Winner for Excellence in Teaching

\* **Todd Shepherd** – Instructor/chair of Cowley College's Social Science Department, became the sixth recipient of the Paul Stirnaman Memorial Award for Teaching Excellence.

\* **Chansi Long** – Journalist of the Year for two-year newspapers.

\* **Cowley Press** – Students received eight first place awards at the spring conference of the Kansas Associated Collegiate Press.

\* **Phi Beta Lambda** – Four first place student awards at 56th annual State Leadership Conference in Salina.

\* **Emilie Magnus** – 2006 national winner of the Diversified Crop Production - Placement Proficiency award program at the 79th National FFA Convention in Indianapolis, Ind.

\* **Trevor Whitsitt, Sarah Richardson, Heather Bailes, and Nathan Holcomb** – Named to the American Choral Directors Association Two-Year College National Honor Choir.

\* **Pam Smith** – Recipient of the Paul Stirnaman Memorial Award for Teaching Excellence.

\* **Victoria Ukaoma** – Arkansas City Student of the Year.

\* **Alex Gottlob** – Cowley College Student of the Year.

\* **Tom Mason, Chris Cannon, JoLynne Stalnaker** – Received Excellence Awards from the National Institute for Staff and Organizational Develop-

ment in Austin, Texas.

\* **Lisa Roberts** – Received Outstanding New Community Builder award for 2006 from the Winfield Area Chamber of Commerce.

\* **Tiffany Hutchinson, Alyssa Showman, Shaye Waple** – Selected to All Kansas Academic Team.

\* **Academic Excellence Challenge team** – Won the regional tournament.

\* **Automotive technology program in Mulvane** – received certification from the National Automotive Technicians Education Foundation and the National Institute for Automotive Service Excellence.

\* **Ed Hargrove** – Inducted into National Junior College Athletic Association Hall of Fame.

\* **Volleyball** – Captured the Kansas Jayhawk Conference Eastern Division title and District M championship. Finished third at NJCAA Division II National Championships in Scottsdale, Ariz.

\* **Women's Indoor Track** – Kansas Jayhawk Conference Eastern Division champions and Region VI champions. Finished third at NJCAA National Indoor Track Championships in Lubbock, Texas.

\* **Mark Phillips** – Women's Indoor Track Coach of the Year.

\* **Tamara McMillan** – National champion in the weight throw at the NJCAA National Indoor Championships.

\* **Women's Outdoor Track** – Kansas Jayhawk Conference Eastern Division champions and Region VI champions. Finished third at NJCAA National Outdoor Track and Field Championships in Coffeyville.

\* Kelsey Poljansek – Women's Field Athlete of the Meet at the NJCAA National Outdoor Track and Field Championships. National champion in the shot put and discus.

\* Men's Outdoor Track – Kansas Jayhawk Conference Eastern Division champions and Region VI champions. Finished third at NJCAA National Outdoor Track and Field Championships in Coffeyville.

\* Daniel Maina – National champion in the 3,000-meter steeplechase at the NJCAA National Outdoor Track and Field Championships.

\* Adam Wolkins – National champion in the javelin at the NJCAA National Outdoor Track and Field Championships.

\* Men's Cross Country – Kansas Jayhawk Conference Eastern Division champions. Finished fifth at the NJCAA Division I National Cross Country Championships in El Paso, Texas.

\* Women's cross country – Finished fourth at the NJCAA Division I National Cross Country Championships in El Paso, Texas.

\* Softball – Kansas Jayhawk Conference Eastern Division champions.

\* Baseball – Kansas Jayhawk Conference Eastern Division champions and Region VI champions. Competed at JUCO World Series in Grand Junction, Colo.

\* Dave Burroughs – Kansas Jayhawk Conference Eastern Division Baseball Coach of the Year.

\* Mike Dabbs – Kansas Jayhawk Conference Eastern Division Baseball Player of the Year.

\* Women's tennis – Region VI Champions. Finished fourth at NJCAA Women's Tennis National Tournament in Tucson, Ariz.



J.C. Louderback, a 1954 graduate of Arkansas City Junior College, was selected as the recipient of the 2007 Outstanding Tiger Alumni Award. At ACJC, he was a state doubles champion and captain of the tennis team. In football, he was the team captain and named the squad's Most Inspirational Player, along with being named an all-conference quarterback. He was also the captain of the basketball team, which finished second in the nation in the 1952-53 season.

After graduating from Southwestern College in 1957, he coached the Cowley men's tennis team to state championships in 1957, 1958, and 1959; and led the Tigers to a national runner-up finish in 1958. He was a Master Teacher for Unified School District 470 in 1984, and served as math instructor and boy's tennis coach for Arkansas City High School for 36 years winning Kansas State team titles in 1989, 1990, and 1991. He was inducted into the Southwestern College Athletic Hall of Fame in 1994, was inducted into the Kansas Coaches Hall of Fame for tennis in 1997, and was inducted into the Missouri Valley Tennis Association Hall of Fame in 1998. He was inducted into the first class of the Tiger Athletic Hall of Fame in 2000. He also had a brief four-year stint as ACHS head basketball coach and girls tennis coach, and served as an assistant football coach at ACHS for 22 years. Louderback was voted national high school regional tennis coach of the year twice and Kansas state high school tennis coach of the year four times.

The Cowley College Endowment Association would like to thank the following for their contributions.

Foundation Gifts July 1, 2006  
- June 30, 2007

President's Society (\$10,000  
- \$49,999)

Title III Matching Program  
Home National Bank  
Don and Peggy Shanks  
Helen Storbeck  
Union State Bank

Benefactor (\$5,000 - \$9,999)

Boyer Educational Trust  
Carpenter & Vickers Trust  
Kirke W. Dale Trust  
William Funk  
Great Western Dining (In Kind)  
Kansas Arts Commission  
Paton Wholesale and Vending

Builder (\$1,000 - \$4,999)

Andreas Family  
Ark City Rotary Club  
Ark City Tumbleweeds  
Russell Bishop  
Martha Brandenburg  
Conco, Inc.  
CornerBank  
Marvin Daniel  
DCP Midstream Matching Gifts  
Program  
Bill and Judy Docking  
Beryle Elliott  
Bruce Endorf

Stephen A. and Janet R. English  
Rowland Funk  
Galaxie Business Equipment  
Gordon and Associates Architects  
Bill and Carol House  
Dan Kahler  
Sarah Lewis  
Dr. Pat and Sandy McAtee  
Mid America Arts Alliance  
Otis and Terri Morrow  
Joe and Patry Neises  
JoAnn Newman  
Brian and Cindy Sanderholm  
James and Janet Sanderholm  
Daniel Stark  
Jack and Gail Stark  
Florence Stephens  
Richard and Nancy Tredway  
Charles Trenary  
United Agency  
David and Sheree Utah

Investor (\$500 - \$999)

American Legion Auxiliary Post  
18  
Scott Branine  
Karen Caroe  
Charles Chapman  
Ron and Pam Doyle  
Casey Eubank  
Curt and Cindy Freeland  
Allen and Beverly Grunder  
General Electric

Bill and Linda Headrick  
Rex and Denise Irwin  
Ellen Kelly  
Mary Kerr  
Kiwanis Club of Arkansas City  
Beverly Lewis  
Local 1004 IUE-AFL-CIO  
John Maier  
Marvin and Anita McCorgary  
Dr. Nick and Christie Rogers  
Soroptimist  
Southwest Plains Regional Ser-  
vice Center  
Betty Sybrant  
TCK Trust & Financial Advisors  
Sarah Wesbrooks  
Westar Energy  
Winfield Publishing Co. Inc.  
Captola Yust  
Hall of Honor (\$100 - \$499)

Abbey Eye Care  
Sid and Jerri Achenbach  
Robert and Helen Adams  
ADM Milling Company  
Sydney Alexander  
Alterra Sterling House  
Hobart and Gail Ammerman  
Joe and Eleanor Anderson  
Steve and Pam Archer  
Ark City High School  
Ark Veterinary Associates  
Arkansas City Chamber of Com-

merce  
Arkansas City Traveler  
Rod and Jody Arnett  
Frankie Arnold  
Joe and Donna Avery  
Max and Nancy Ayers  
B Four Flying, Inc.  
Warren Baber  
Albert and Karen Bacastow  
Jack Bacastow  
William Bailey  
Larry Bartelson  
Clifford Bazil  
Buel Beck  
Becker Tire Company  
Beta Sigma Phi - City Council  
Dick and Dolly Bonfy  
Helen Born  
John and Julie Bossi  
David and Trina Boswick  
Doug Boxberger  
Roger and Suzanne Brown  
Ken and Janet Buss  
Buterbaugh & Handlin  
Brett and Cathy Butler  
Chris Cannon  
Eunice Cassidy  
Tisha Catlin  
Center for Emergency Medicine  
of Western Pennsylvania  
Jose and Marlys Cervantes  
Jan Chapman  
City of Arkansas City  
Joseph and Nel Clark

Judy Clark  
Albert and Audine Clemente  
John and Chris Clemente  
Gene and Donella Cole  
Father Francis Cox  
Tony and Vicki Crouch  
Bruce and Amy Crouse  
Mike and Sue Crow  
Melvin and Betty Current  
Kenneth and Beth Czaplinski  
D & D Farm Equipment, Inc.  
Jim and Rae Dale  
Lillian Damewood  
Gary Damewood  
Verna Davis  
Danny and Lin Deener  
Robin Delp  
J.P. and Vicky Dewell  
Iris Dittmann  
DiVall Retail Liquor  
John and Connie Donatelli  
Olin and Marcy Dovel  
Terry Dubach  
Dixon Dyer  
Early Bird Lions Club  
Karl Eason  
Elite Advertising  
EMC Insurance Companies  
Emprise Bank  
Anne Erhart  
Doug and Dejon Ewing  
Karl and Dorothy Faidley  
Barbara Farley  
Robert and Robin Fencil

Dennis and Karone Finger	Jimmie and Joyce Holloway	Richard Leu	Robert and Bonnie Niles	Wayne Robinson
First Intermark Corporation	Paul and Donna Homan	LM Consultants	Randy and Debbie Nittler	Rogers & Lanning
First United Methodist Church	Mary Hunt	Long & Neises CPA's	Tim and Susan Norton	Dr. David and Rhonda Ross
Genesis Class	Ronnie and Terri Hutchinson	J.C. and Donna Louderback	Tami Norwood	RPPPG, Inc.
Richard Foore	Aaron and Amanda Iverson	Lyondell	Dr. Jerry and Kristi Old	Rush Realty
Aubrey and Barbara Foster	Joline Iverson	Scott and Rhoda MacLaughlin	Fred and Tonya Olenberger	S and Y Industries, Inc.
Foster's Furniture	Steve and Joi Jay	Dr. Rodger and Melba Maechten	Jason and Shannon O'Toole	Tom and Sue Saia
Frederick Freeman	JD Liquor Store	Lyle Maninger	Julia O'Toole	Samford-Stover Agency
Jim and Marvis Gaddie	Ronnie and Anita Jenkins	Zack and Beverly Manuszak	Orbie Overly	Dan and Lois Sampson
Galaxy Tool Corporation	Shirley Jester	Larry Marshall	Elizabeth L. Palmer	Peggy Santiago
Gambino's Pizza	Conrad and Janet Jimison	Patricia Martin	Roy and Linda Pepper	Gus and LeAnna Sauzek
Ed and Margaret Gililand	Hubert and Mildred Johnston	Lane and Shannon Massey	Philip Phillips	Tom Schmidt
Mike and Bonnie Givens	Allan Jones	Kenny and Pat Mauzey	Pilgrim Rest Baptist Church	Schmidt Jewelers
Sears - Winfield	Danny and Sandra Jones	Clarence Maxwell	Arthetta Polly	Larry and Wanda Schwintz
J.G. and Doris Goff	Mary Stanton Jones	Diane Mayfield	Potter's Liquor Store	David and Rebecca Scott
Kern and Bette Gordon	Gary and Wilma Jones	Mr. and Mrs. Sonny Maynard	Pratt Liberty Middle School	David and Callie Seaton
Brett Gortlob	Herlynda Jordan	Mr. and Mrs. Darin McAtee	Bradley and Barbara Priest	Connie Shanks
Graves Drug No. 11	Gary and Freida Kahle	Lew and Cindy McAtee	Jim and Jan Pringle	Brian and Kristi Shaw
Gregg & Simmons, CPA's	Kay Kautz	Theresa McCoy	Joseph Prochaska	Matthew Sheets
Bill and Dorothy Griffith	Warren Kelley	Charles McKown	RAG Motors	Sharon Shelton
Slade and Terri Griffiths	Mr. and Mrs. John Kelly	Amy McWhirt and Terry Quiet	Jim Rairdon	Wayne and Sandy Short
Jeffery and Kathi Grossenbacher	Paul and Diane Kelly	Fred and Margor Menefee	Jim and Karon Ramirez	Sonic Drive-In Cowley County,
Michael and Judi Groves	Kay Kennedy	Betty Metheny	Richard Raney	Inc.
Richard Haddock	Mr. and Mrs. Jack King	Albert Miller	Randall Ray	Joe and Mindi Shriver
Dayna Hammel	Kline Motors	Robert and Olive Milner	Bob Redford	Jean Slaven
Linda Hankins	Erwin and Fern Knocke	James and Wilma Mitchell	Bill Reedy	Dale Smith
Ed and Linda Hargrove	Dr. Juri and Susan Kolts	Robert Moffatt	Dick and Judy Reedy	Mary Smith
Tiffany Hatfield	Mary Korte	Valerie Morris	Reedy Ford	Randy and Pam Smith
Cecil Hawkins	Jeff and Julie Kratt	Scott and Heather Munson	Joan Reep	Roy Smith
Rock and Ann Headrick	L.G. Pike Construction Company	Munson Insurance Agency, Inc.	Gerald Reeves	Dr. Daniel and Vicki Snowden
Steve and Carol Hearne	Harold and Mary Lake	Janice Neagle	Sidney and Sharon Regnier	Robert Somers
Donald Heflin	LaDonna Lanning	Margaret Neal	Bill and Arleta Rice	Bill and Becky Spear
Jorge Hernandez	James Largent	Luella Nelson	Arnold Ridder	Ken Spurgeon
Jean Hill	Robben and Wilma Ledeker	Dr. Richard and Marlys Nelson	Mark Ridder	E. Wayne Stalnakar
Kim and Cynthia Hocker	Legacy, A Regional Community	Lance and Tamara Niles	Rindt Erdman Funeral Home	Lynn and Jolynne Stalnakar
Richard and Melissa Hollister	Foundation	Dr. Nathan and Amy Niles	Lisa Roberts	State Farm Insurance

Joseph Stewart	Wichita State University Dance Team	Judith Baxter	David and Jodi Combs	Thomas Gillock
David Stone	Vance Wiley	Donald and Mary Frances Beckelheimer	Conoco Phillips	Kenneth Gilmore
Lawrence and Martha Lallman Stover	V.J. Wilkins	Glenn and Vivian Bell	Billy and Kathy Cook	Dean and Elains Gilstrap
Tad and Janice Stover	Peggy Williams	Michael and Kathy Bellis	Albert and Janell Craig	Paula Glasser
John and LeeAnn Sturd	Gerald Wilson	Don and Margaret Bennett	Eddie and Janis Crittenden	Doug and Celi Goff
Larry Swaim	Mary Wineinger	Leslie Berryhill	Eric Crittenden	Jim and Peggy Graber
James and Donna Sybrant	Winfield Chiropractic	Ron Blevins	Roy Thomas and Joni Curl	Joe and Ann Gray
Linda Sybrant	Winfield Consumer Products, Inc.	Nicholas Blick	Naoma Cushenbery	Jim and Anita Green
Taylor Drug	Winfield Correctional Facility-Inmate Benefit Fund	Ralph and Mary Bonnell	Gilbert and Joyce Daniel	Leonard Groene
The Ridge	Morgan Wright	Anna Borrer	Roy Danks	Amy Grose
The Samuel Roberts Noble Foundation	Willard Wright	Thomas and Norma Bossi	David Daulton Sr.	Diane Guyot
Charlotte Thompson	Michael Young	Darlene Bracewell	Carl Davis	Hazel Hadicke
Willard and Barbara Thompson	Ed and Karen Zeller	John and Celine Brazle	Judith Day	Leslie Hadorn
F. L. and Arlene Thurman	Zeller Motor Company	Vicki Brei	William Dee	Keith and Louise Hanshaw
Turn-of-the-Century Enterprises	Jerry Ziegler	Angela Brown	Thomas and Elizabeth Dempsey	Larry Hargrove
Eddie and Mary Turner	Kenneth and Jann Ziegler	Ronald and Anne Burgess	Harry Diamond	B.E. and B.J. Harris
Angela Turney	Friend (Under \$100)	Mary Burkhardt	Samantha Doffing	Donald Hastings
Robert and Gwen Tyler	Adams PTO	Jane Campbell	Barbara Dornhoffer	Daniel and Rosalie Hatfield
Universal Steel Buildings	Leo and Joleen Alexander	John Cary	Judith Drongoski	Tom Haynes
USD 470	Lois Allen	S.R. and Jo Chance	Buel Duncan	Dawna Headrick
Elaine Venters	Thomas and Anne Allen	Don and Velma Cheslic	Ted and Darlene Eckstein	Margaret Hearne
Allison Viola	Wayne and Pat Ammerman	Jack and Elaine Christie	Sharon Eggen	Marge Hendershot
Chris Vollweider	Larry and Rose Anstine	Hazel Christy	Carey Eskridge Lybarger	Gary and Deborah Herndon
Irvin and Pat Wahlenmaier	Anstine Family Partnership	Ernie and Freda Cink	James and Myra Estep	John Hitchcock
Donald Wald	Nick and Nadine Anzelmo	Kitten Circle	D. Evans	Gary Hockenbury
David Walker	Caroline Applegate	Glenn and Nancy Clarkson	Charles and Carol Faulkner	Angela Holmes
Walnut Valley Title	Marty and Whitney Baker	Class of 1954	Michael Fell	David and Alana Holt
Washburn University	Zachary and Lori Barnes	Class of 1981	Betty Joe Fisher	Diana Holteke
Randall and LeArta Watkins	Kenneth Barnhart	Class of Wifani	Phyllis Jean Fleischauer	Home National Bank Heritage Club
Dick Watson	Kenneth Barnthouse	Earl Clayton, Jr.	Lance and Karen Foreman	Jane Houdek
Webber Land Company	Thomas and Janet Bartel	Miriam Clouse	Marjorie Frankenberg	Richard and Deanna Houser
Karolee Weller		Stan and Melissa Cochran	Kenneth Franklin	Rodney Hover
Deuane and Virginia Wells		Brenda Coffey	Floyd Fry	Rosie Howell
James Weston		Tom and Dawn Colquhoun	Garden Plain High School	Nette Hudson
		Kevin and Brenda Colwell	Ronal and Charlotte Gee	Vern Hull
			Connie George	

Jackson and Mary Hummingbird	Robert and Suzann Mangan	Jason and April Nittler	Rose Ann Riley	Ralph Speer
Donald and Barbara Hunt	Ellen Maninger	Donald Nobiling	Fred Rindt	Ione Spence
Walter and Alice Hunt	Phyllis Markley	Patrick and Marilyn O'Hara	William Roberson	David and Debra Stanley
V. K. Hurchison	Rex and Ella Marsh	Victor and Judith Olmstead	Val Roderick	Robert Starr D.D.S.
IBM International Foundation	Kelly Marshall	Anna Paisley	David Rogers	Darel and Donna Sterner
Marlene Ingram	Frank Martin	James Palmer	Terry Ronan	John and Linda Stewart
Rod and Karen Iverson	Scott and Jeanne Martin	Mildred Palmer	Steve and Melinda Ross	William and Velma Stewart
Mr. and Mrs. Elliott Jackson	Steve and Joyce McArtor	Jon Parman	Bill Rowe	Bill and Shelly Strinson
Jamie Jackson	Barbara McCartney	Parman, Tanner, Soule & Jackson	Gary Rowe	Barbara Stone
Jackson - Hunter, LLC	Bryan and Lisa McChensey	Tom Parmley	Bedford and Dorothy Rush	David and Lois Stone
Betty Johnson	Tom and Donni McClafin	Jo Ann Parsons	Rex Rush	Mickey Sullivan
Roy Jones	Jim and Sherrilyn McConnell	Alan Paton	Robert Rush	L. E. and Billie Swanson
Tom Junkins	Martin and Ava McCorgary	Mark and Debra Paton	Marlene Ryan	Myrna Swanson
Kadau and Son Construction	Patrick McDonald	Virginia Peacock	George Salmon	Ronald Sweely
James and Jo Karlin	Andy McFayden	Delma Pearson	Connie Schaefer	Leland and Nancy Sweetwood
Ralph and Janice Keefe	Ed McGowan	Bill and Julie Perdue	Dwaine and Virginia Schimmel	Chris Taylor
Buddy and Peggy Kendrick	Robert and Nancy McGregor	Valerie Perkins	Virgil and Tharan Schmidt	Colleen Taylor
Janet Kennedy	Dorothy McKeever	Barry and Barceley Pierce	Scott and Michelle Schoon	Michael and Tara Taylor
Charles Kinzie	Diane McKinney	David Pitsner	Maurine Schroeder	Helen Templeton
James Kirkbride	Gina McKown	Terri Pressnall	Mark and Barbara Scram	The Boutique
Barbara Krout	Patricia McMains	Jean Prothro	John and Julie Seitz	Herbert Thompson
Richard and JoRita Krout	Mark McNeil	Nathan and Joanna Pryor	Tamela Shaw	Maurice and Charlotte Thomson
James and Lisa Kuecker	Clarence and Carol Milbourn	Larry and Barbara Rademann	Shear Success	Rita Thurber
Doug and Nancy Lasseter	James and Janice Miller	Gilbert and Linda Rahm	Sheldon's Pawn Shop	James Topper
James and Juanita Lazelle	Jim Miller	Neewannah Ramsey	Betty Shurts	Krystal Trimmer
Adam Learning	Russell and Pennie Miller	Sherri Ramsey	Oren and Donna Skiles	James and Martha Turner
Donna Lester	Marie Millett	Mott and Delois Randle	Skyline Schools	Ryan Turner
Lemenar and Virginia Linnell	Ernest Moore	James Reed	Nikki Slaven	Twin Rivers Developmental
Richard and Joyce Littrell	Madeline Morgan	Phillip Reinking	Forest and Sandra Smith	Services
Chansi Long	Mary Morris	Arky Reyes	Marshall Smith	USD #326 Logan Schools
Donna Long	Greg and Patricia Mugler	Ronald Rhoton	May Belle Smith	Michael and Jan Van Hoomissen
Robert and Barbara Loop	Linda Mullins	Jerry Rich	Ramona Smith	Donald Vannoy
Allie Loquist-Damewood	Dennis and Joyce Myers	Beth Richardson	Jean and Ellen Snell	Deborah Vaughn
Stuart Luder	Mark and Melinda Neal	Mark and Yvonne Richardson	Gene Snyder	H. M. and Annavee Villers
Betsy Lunkwicz	Tom and Betty Neptune	Brittany Richerson	Kurt Solomon	Lynn Vorak
Wade Magnus	Nathan Newby	Kathy Riddle	Herb and Janet Sparks	Loretta Waldroupe

Robert Watson  
George Weekley  
Ferne Welles  
Debra Wells  
Ray and Merylene Wentworth  
Cathy Wilcox  
Arlis and Martha Wilson  
Carol Wilson  
Janet Wilson  
Roy Wittenborn  
Gary Wolff  
Sandra Woodworth  
Tiffany Wright  
Robert and Sue Yoachim  
Beatrice Young  
Thomas and Peggy Zerger  
Bruce and Debbie Zimmerman

#### TIGER BOOSTER CLUB

Super Boosters (\$2,500 or more)  
Great Western Dining/CCCC  
Home National Bank  
Orthopedic & Sports Medicine at  
Cypress LLC  
Salzman Concrete, Inc.  
Union State Bank

Orange & Black Club (\$1,000  
-\$2,499)  
Ark City Glass Co.  
CornerBank  
Jeff Hoge Concrete LLC  
Paton Wholesale and Vending  
Co.  
United Agency

Bengal Club (\$500 - \$999)  
Ark Valley Distributing, Inc.  
Coca-Cola Bottling Co.  
Cowley County Development  
Services  
Elite Advertising  
Jan's Sport Shack  
Dr. Nicholas L. Kinsch  
Dr. Pat and Sandy McAtee  
Dennis and Marcia Muncy  
Rinde-Erdman Funeral Home  
David and Sheree Utash

#### Tiger Club (\$300 - \$499)

Leroy and Kristie Alsop  
Ark Veterinary Associates  
Barton Energy, LLC  
Darren and Carolyn Burroughs  
Todd Clark  
Gene and Donella Cole  
Foster's Furniture, Inc.  
Galaxie Business Equipment  
Ron and Donetta Godsey  
Allen and Beverly Grunder  
Dean and DeAnna Harp  
Elliott Jackson  
Vernell and Celestine Jackson  
Matthew and Roxanna James  
Conrad and Janet Jimison  
KCOK, Inc.  
KMB Enterprises LLC  
Larry Langstrom  
Otis and Terri Morrow  
Nathan and Amy Niles

Lance and Tamara Niles  
Nick and Christie Rogers  
Tom and Sue Saia  
Schmidt Jewelers  
Sheldon's Pawn Shop  
Sonic Drive-In Cowley County  
Inc.  
Dr. Rod and Trisha Stoy  
Topline Steel Buildings  
Waldorf-Riley, Inc.  
Winfield Consumer Products,  
Inc.  
Woods Lumber of Arkansas City  
Dr. Bob and Sue Yoachim  
Zeller Motor Co.

#### Cowley Friend (\$175 - \$299)

Sid and Jerri Achenbach  
ADM Milling Co.  
Jim and Paula Aldrich  
David Andreas  
Gary Anstine  
Larry and Rose Anstine  
Robert Anstine  
Steve and Pam Archer  
Albert and Karen Bacastow  
Marshall and Doris Brentlinger  
Browns, Inc.  
Vernon Buffington  
David and Vicki Burroughs  
Jeff Carter  
Terry Cassiday  
Jose and Marlys Cervantes  
Don and Velma Cheslic  
City of Winfield

Tony and Vicki Crouch  
Bruce and Amy Crouse  
CWA Local 86004  
Davis Auto Center, LLC  
DiVall Retail Liquor  
Ron and Pam Doyle  
Edward Jones  
David and Jennifer Faust  
Curt and Cindy Freeland  
Kenneth Gilmore  
Ed and Linda Hargrove  
Glen and Sue Harris  
Hawks Funeral Home  
Ben and Leslie Head  
Bill and Linda Headrick  
John and Janice Hitchcock  
Rex and Denise Irwin  
Brian Jackson  
Steve and Joi Jay  
Jerry's Donut Shop  
Hubert and Mildred Johnston  
Kan-Pak LLC  
Mary Kerr  
Charles and Darlene Kinzie  
Joseph Krisik  
L.G. Pike Construction Co.  
J.C. and Donna Louderback  
Mangen Chiropractic Clinic  
Jay and Carrie Mapel  
Richard and Barbara Mehuron  
Midwest Electric Supply, Inc.  
Munson Insurance Agency, Inc.  
Randy and Debbie Nittler  
Optimist Club of Arkansas City  
Neal and Anna Paisley  
David and Sally Palmer

Marcy Peroo  
Mark Phillips  
Philip and Mary Ann Phillips  
Puritan Billiards  
James and Sylvia Reed  
Rob Carroll's Sandblasting/Paint-  
ing  
David and Deborah Schaller  
Larry and Wanda Schwintz  
Russell and Judith Secrest  
John and Julie Seitz  
Don and Peggy Shanks  
John and Denise Showman  
Pamela Smith  
John and LeeAnn Sturd  
Ronald and Patsy Sweely  
Taylor Drug  
Turn-of-the-Century Enterprises  
Twin Rivers Developmental  
Support  
Two Rivers Co-Op  
Universal Steel Buildings  
Joseph and Mary Jane Vaclavek  
Mike and Vicki Webb  
Peggy Williams  
Winfield Motor Co.  
Robert and Jill Wood

Century Club (\$100 - \$174)  
Abbey Eye Care  
Ark City Country Mart  
Ark Hospitality, Inc.  
Ark Valley Credit Union  
Ark Valley Physical Therapy, Inc.  
Arkansas City Lion's Club  
Arkansas City Traveler

Frank Arnold  
Kent and Barbara Booher  
David and Trina Bostwick  
Scott and Yvonne Branine  
Melburn Brown  
Bud's Heat and Air  
Mary Burroughs  
Joe and Connie Carder  
Tisha Carlin  
Collision 2 Custom  
Conco, Inc.  
Jim and Rae Dale  
David and Carol Daulton  
Bryan Dennett  
Virginia Donaldson  
Charles Dow  
Judith Drongoski  
Terry Eaton  
Barbara Farley  
First Intermark Corporation  
Graves Drug No. 11  
Great Plains Television, Inc.  
Phillip Groves  
Cathy Hendricks  
Gary Hockenbury  
Richard and Melissa Hollister  
Hutchinson Electric, Inc.  
Ellen Kelly  
Kline Motors  
KUHN Mechanical, Inc.  
Rick and Sandi Lohr  
Stuart and Betsy Luder  
Scott and Rhoda MacLaughlin  
Tom Mason  
Lane and Shannon Massey  
McCluggage, VanSickle & Perry

Ronald and Carolyn McKeaigg  
Charles McKown  
Meiers Tax Accounting Service  
Trayla Mitchell  
Steve and Suzanne Moore  
Marry and Lori Moulton  
Greg and Patty Mugler  
Steve O'Hair  
Jason and Shannon O'Toole  
Elizabeth Palmer  
Michael Patrick  
Delbert Peters  
Lonn and Darlene Poage  
Powers Roofing and Siding Co. \*  
Quality Auto Sales  
Robert and Jacque Ramirez  
Bill and Pamela Ramsey  
Jehren Raney  
Reedy Ford  
Sidney and Sharon Regnier  
Arky Reyez  
Ruppelius Fine Jewelers  
Samford-Stover Agency  
Mike and Marla Sanderholm  
Steve and Laura Sandman  
SBC Foundation  
Brian and Kristi Shaw  
Shear Success, Inc.  
Ellen Showman  
Joe and Mindi Shriver  
Robert and Janice Sneller  
Lynn and JoLynne Stalnaker  
Stare Bank of Winfield  
State Farm Insurance - Starlyn  
Venus  
State Farm Insurance - Mike

Dobson  
Ron Steiner  
Tad and Janice Stover  
Suttles Transmissions, LLC  
Paul and Lee Tabor  
Tamoil  
The Focused Image  
Rita Thurber  
Ryan and Cassie Turner  
Chris Vollweider  
Alden Walling  
Donald and Dee Ann Ward  
Sarah Wesbrooks  
Winfield Chiropractic Office

Friend (Under \$100)  
Rod and Jody Arnett  
Michael Baker  
Harold and Allison Barse  
Buel Beck  
Chris and Kim Biddle  
Lester Wade Boyd  
Jeff Carter  
Vesta Carter  
Todd Clark  
Katrina Colwell  
Kenneth and Beth Czaplinski  
Cynthia Davis  
Lindsey Davis  
Robert and Patricia Dill  
Lisha Dunlap  
Doug and Dejon Ewing  
Mark Farris  
Jeff Fluty  
Fritzer Body Shop  
Jim and Marvis Gaddie

Belva Gardner  
Dan and Vicki Givens  
Greendoor Lafamilia  
David and Lisa Grose  
Roger Gubichuk  
Ed and Linda Hargrove  
Sharon Hephner  
Jimmie and Joyce Holloway  
Matthew and Roxanna James  
Jim's Total Service  
Abbey Keiswetter  
Douglas and Amy Lawson  
Marcus Adler Insurance Agency, Inc.  
Patrick McDonald  
John Moore  
Scott and Heather Munson  
Mark and Melinda Neal  
Dr. Richard and Marlys Nelson  
Jason and April Nittler  
Olen Medical Supply  
Alan and Susan Paton  
Don Piro  
Roger and Joanne Pridey  
Dick and Judy Reedy  
Val Roderick  
Lois Sampson  
Aaron and Lindsay Sanderholm  
Scott and Michelle Schoon  
Tye Smyer  
Dr. Daniel and Vicki Snowden  
Mark Speck  
Larry Swaim  
Traver's, Inc.  
Larry and Joetta Wood

The following individuals and organizations have made annual gifts to the college over a long period of time. We deeply appreciate their support.

Long Term Scholarships Funded Annually  
American Legion Auxiliary Post 18  
Ark City Tumbleweeds  
Beta Sigma Phi - Mary Brannon  
Nursing Scholarship  
Boyer Educational Trust  
Cowley Hall of Fame Scholarship  
J.P. Dewell Family Scholarship  
Irwin Art and Design Fund  
Rotary Club of Arkansas City  
Richard E. Tredway Scholarship  
Captola Yust Scholarship

This report is generated from the Alumni and Development Office at Cowley College. We have tried to be as accurate as possible, but if you discern mistakes of any kind, please let us know so that they may be corrected.

Contact us at (1-800-593-2222 x 5291 or x 5319)

**COWLEY**  
**COLLEGE**

125 South 2nd Street  
Arkansas City, KS 67005